

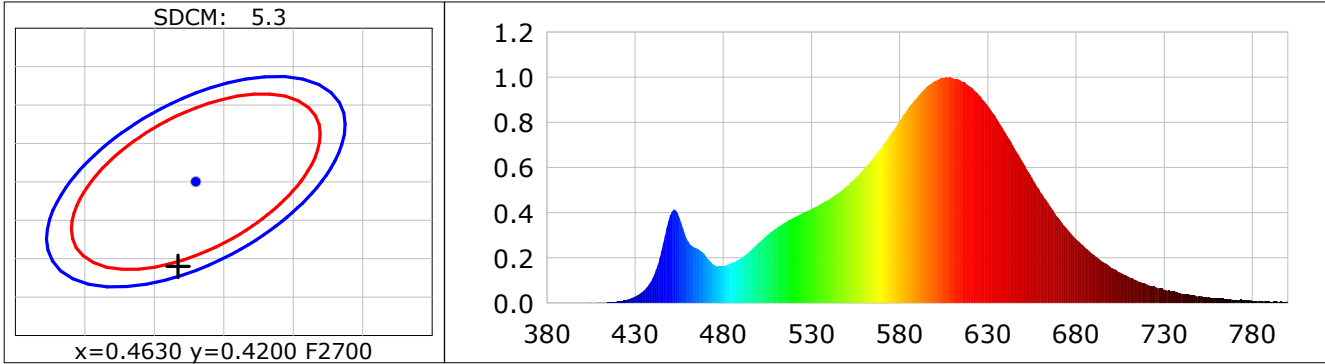
Lightsource Test Report

Product Infomation

Product Category: LED STRIP	Product Type: LED STRIP
Product Spec: VOLX 4	Product Number: 266
Manufacturer: TECSOLELED S.L.	Buyer: TECSOLELED S.L.

CIE Colorimetric Parameters

Chromaticity coordinates: $x=0.4617$ $y=0.4090$ $u(u')=0.2644$ $v=0.3513$ $v'=0.5270$
 CCT: $T_c=2662K$ ($duv=-0.00074$) Color Ratio: $R=0.256$ $G=0.721$ $B=0.023$
 Peak Wavelength: 608.1nm Half Bandwidth: 111.9nm
 Dominant Wavelength: 584.6nm Color Purity: 0.614
 CRI: $R_a=82.6$, $avgR(1\sim14)=78.1$, $avgR(1\sim15)=77.8$ TM30: $R_f=85$, $R_g=95$
 GAI: $GAI_BB_8=95.5$, $GAI_BB_15=103.8$, $GAI_EES=45.3$
 R1 =82 R2 =93 R3 =94 R4 =80 R5 =83 R6 =93 R7 =80 R8 =57
 R9 =9 R10=84 R11=80 R12=77 R13=84 R14=98 R15=73
 Color Quality Scale: $Q_a=82.6$, $Q_f=84.9$, $Q_p=84.8$, $Q_g=90.5$
 Q1 =77 Q2 =93 Q3 =85 Q4 =81 Q5 =84 Q6 =84 Q7 =83 Q8 =85
 Q9 =93 Q10=91 Q11=87 Q12=84 Q13=82 Q14=72 Q15=74



Photometric Parameters

Luminous Flux: 923.88 lm Efficiency: 112.34 lm/W Radiant Power: 2.854 W
 Total mains efficacy: 104.03 lm/W Energy Efficiency Class: F (EU 2019/2015)

Electric Parameters

Voltage: 12.000V Current: 0.6854A Power: 8.22W
 Power Factor: 1.0000 Frequency: 0.00Hz

Test Infomation

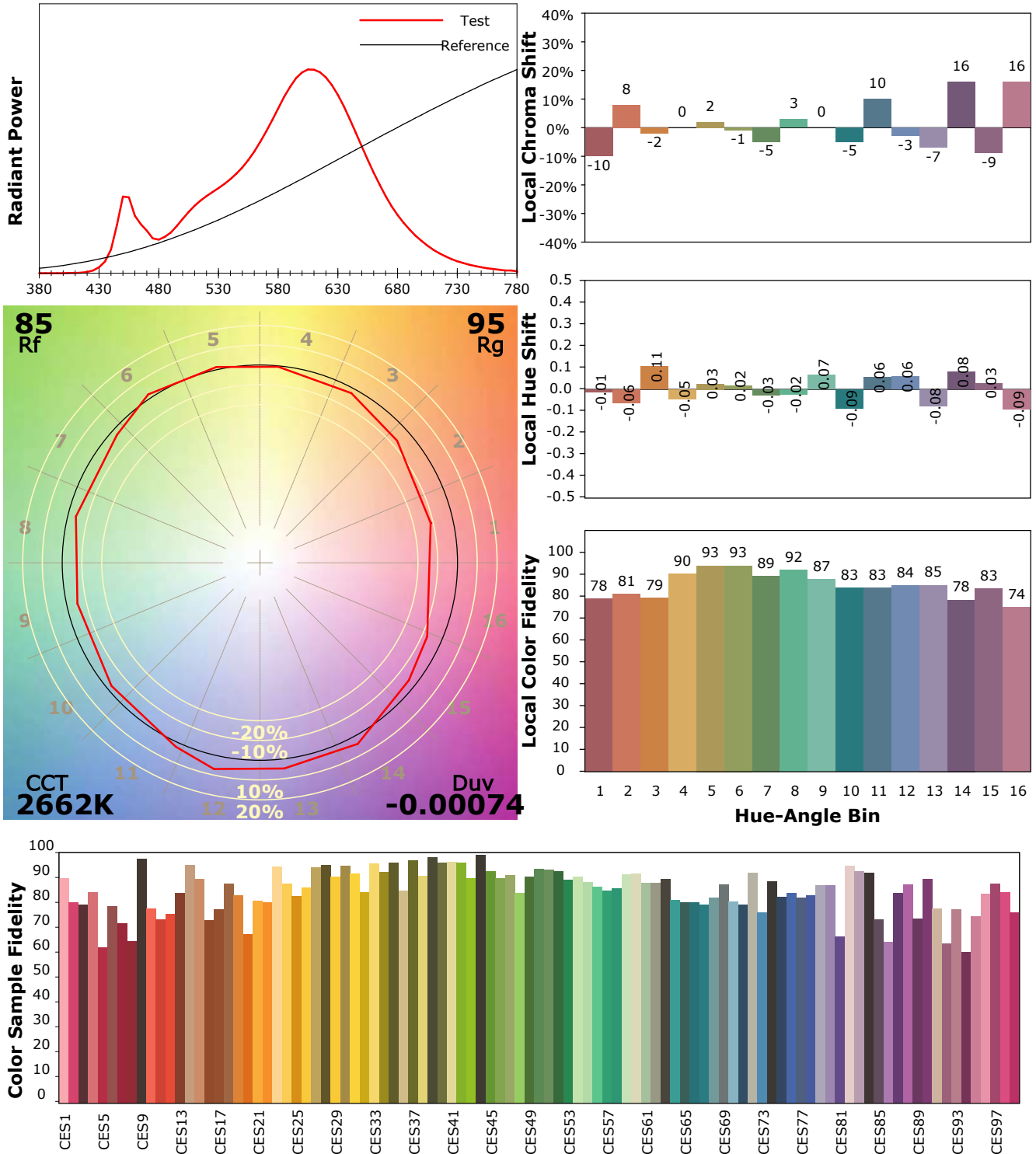
Scan Range: 380~800:1nm	Photometric Method: sphere-spectroradiometer
Stabilization Time: 20 Sec ALC.: 1.0000	Photometric Condition: Sphere diameter: 1.50m, 4PI
Max of Signal: 47900 (2218)	CCD Integration Time: 746.62 ms

IES TM-30-18 Color Rendition Report

Product Information

Product Category: LED STRIP
 Product Spec: 21059602440572
 Manufacturer: TECSOLELED S.L.

Product Type: LED STRIP
 Product Number: 266
 Buyer: TECSOLELED S.L.



Condition: Tx:18.7°C, Ti:18.4°C, R.H.:60%
 Test Lab: TECSOLELED S.L.
 Operator: JORDAN GIL DIAZ

Test Device: Inventfine CMS-2S (Plus)
 Test Time: 2021-10-29 10:15:50
 Inspector: